

BID ADDENDUM #1

November 14, 2024

Montecito Fire Protection District Fire Station 92 – Gates and Carport ITB# 2024-005

To: Prospective Bidders

This Addendum forms a part of the contract documents and modifies the original bidding documents. Please note this Addendum as received and acknowledged on the proposal submitted.

In response to bidder questions for ITB 2024-002, the following responses were issued and are included to clarify various details of the existing plans and scope of work.

Modifications

Responses to July 8, 2024 ITB Bidder Questions:

1. Are we wrapping the structural steel with wood? The architectural drawings do not indicate wrapping the steel with wood however, the structural details make reference to it.
Response: *There is no wood covering the tube steel at the carport. The steel will be exposed, primed and painted. Grind all welds smooth.*
2. What are the specifications of the gate operators?
Response: *Specifications provided for access equipment and control (see attached brochures below):*
 - *Swing Gate Operator – All-O-Matic SW-350 DC (1 HP)*
 - *Swing Gate Keypad – Doorking 1506 Surface Mount*
 - *Pedestrian Gate Keypad – Simplex 1000*
3. Plans call for new precast pavers for uncovered parking space to the West of the new Carport, and new pavers to be infilled for parking areas at the gate and Carport. Please clarify the type/ specification & color of pavers to be supplied and installed?
Response: *Existing pavers to be reused, first at the gate parking spots (complete coverage) and second at the carport. There are not enough existing pavers to complete the area shown at the carport so existing pavers will be combined with new pavers, as specified below. New pavers will create a uniform border around the existing pavers.*

Manufacturer: Belgard paver
Model: Holland stone -Heritage collection
Color : Rio color (Light gray)
Thickness: 80 mm thickness (60 mm ok if 80 mm not available)
Size 4" x 8" x 2 3/8"

4. There is reference to solar accommodations for the future. What are the details as far as what you expect from the General Contractors?

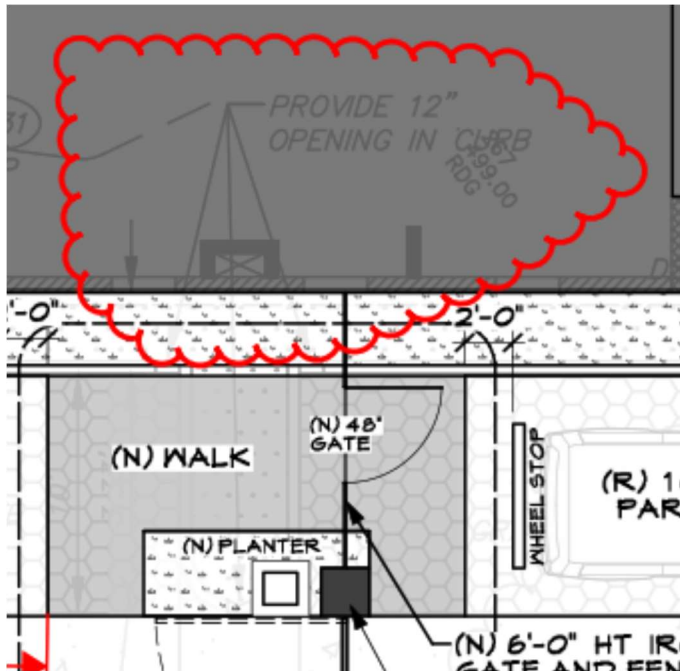
Response: *The electrical plan includes preparatory work for future solar. In addition to what is shown on the plan, a 1-1/4" conduit from the carport structure post to the pull box at the building is to be installed for future panels on the roof.*

5. Reference was made to special circuitry for emergency power. Can you provide detailed information for this?

Response: *Gate operators to be connected to a circuit that is tied to the emergency power.*

6. Sheet A1.0

- a) Hidden in the shaded area in the building states "Provide 12" Opening in Curb". Please clarify what this is and provide details for the opening (see image below).



Response: *This is not a part of the scope of work. This is an archive from the existing original plans.*

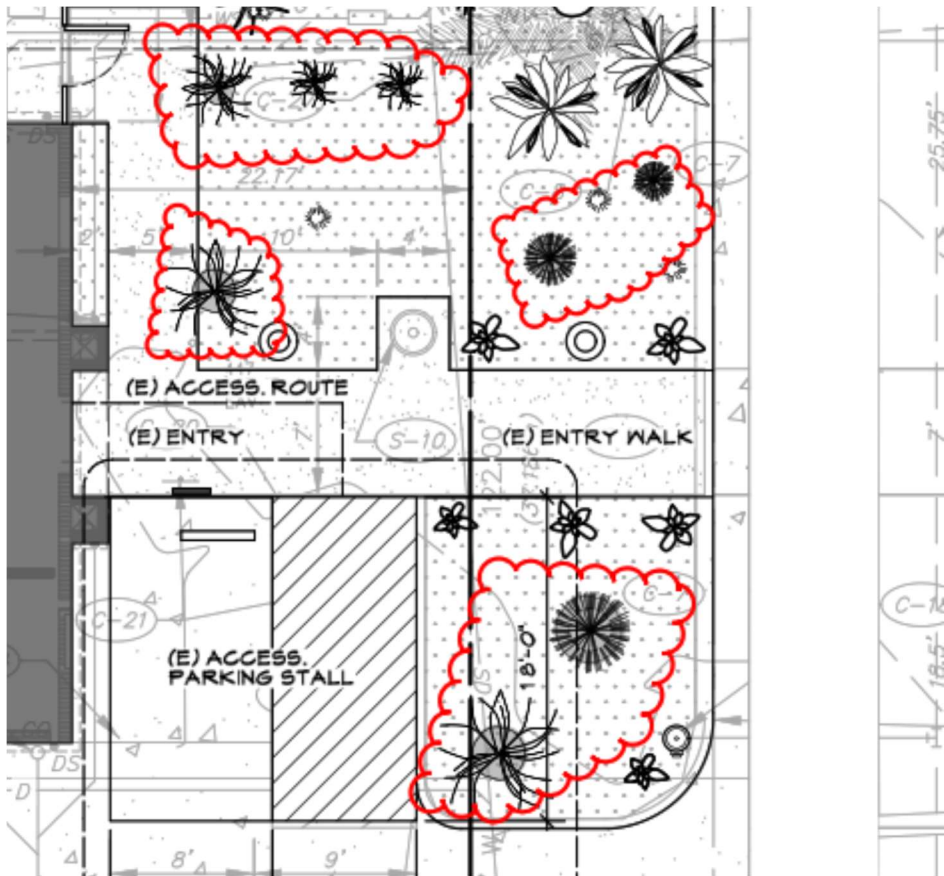
b) New carport roof is stated to be 2x T & G roof with Plywood sheathing and PVC roof. Please provide roof section detail and show on plans.

Response: *See sheet D1.0 details.*

c) New planter is shown to be installed at new walk area located adjacent to new man gate. Please clarify what planting materials are to be installed at this location (see image below).

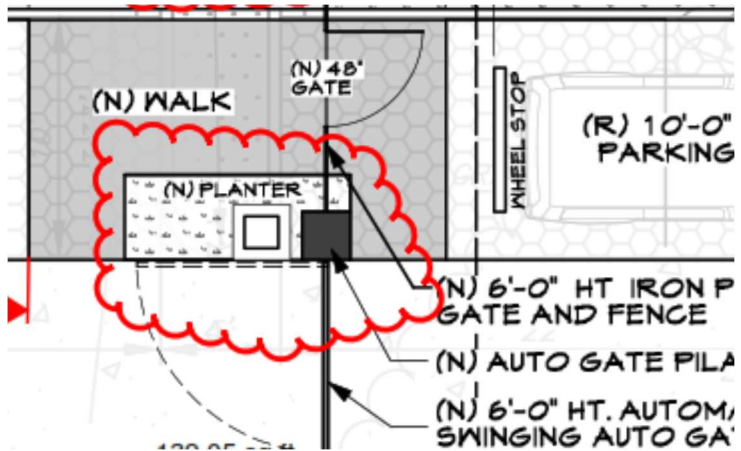
Response: *Sleeving to be provided to this area but otherwise, landscaping is not part of this bid.*

d) Site plan shows new planting to be installed at the Northwest corner of the site along Sycamore Canyon Road. Please confirm if new planting is to be installed in this location as planting already exists in this area (see image below).



Response: *Landscaping is not a part of this bid.*

e) New Walk is shown to be installed at the same location of the new entry fence & man gate. Please confirm what finish floor materials the walk is to be constructed? If this is to be concrete walk, provide thickness, color, reinforcement, base material, sections/details for the walk and how it transitions to the adjacent existing precast vehicular pavers (see image below)?



Response: *Concrete color and finish to match existing colored concrete (terra cotta) . All surfaces to be flush with adjacent walking and parking surfaces. See structural drawings sheet S3 details 1 thru 4 for typical slab construction.*

7. Sheet D2.0

- a) Detail #4/D2.0 for the new Man gate calls for Key pad for this new pedestrian entrance. Please confirm if this is to be powered by an electric strike or a manual keypad. Please provide specification for Keypad hardware.

Response: *Pedestrian Gate Keypad – Simplex 1000 (see attached brochure).*

- b) Detail #6/D2.0 calls for Exterior Cement Plaster Finish. Please confirm if finish is to be sand finish, smooth troweled finish, etc.?

Response: *Plaster color and finish to match existing firehouse plaster finish and color.*

- c) Details 1 & 6/D2.0 call for “Sandstone Stone Cap” on top of the 2-masonry pilers at the new entrance gates. Please provide manufacturer, spec. number, etc. for pricing.

Response: *Please use real Santa Barbara sandstone appropriate for this condition.*

- d) Sheet D2.0 shows (2) wall mount type B fixtures that are not shown on the E-sheets or on the EM1.0 fixture schedule. Please provide power and light fixture specification for these two fixtures and show on plans.

Response: *Please see sheet EM 1.0 for light fixture specifications.*

8. Sheet EM1.0

- a) Per electrical subcontractor, the light fixtures shown on sheet EM1.0 seem to be generic call outs. Please provide a more detailed specification for pricing.

Response: *The Handleman fixture called out is not to be a pendant mount. It is a wall mount (wall bracket). Please see plan specification and refer to Handleman website.*

9. Sheet S3

- a) Details 5, 6, 7, 8, 9 call for carport structural steel posts and beams to be “Wood Wrapped” per Architectural sheets. No details are shown for wrapping the steel members with wood. Please clarify details, materials, finish, paint, etc. for wrapping the structural steel members?

Response: *There is no wood covering the tube steel at the carport. The steel will be exposed, primed and painted. Grind all welds smooth.*

- b) Details 6 & 7/S3 call for wood 6x10 roof rafters to be attached with (4) 10d toenails to 2x nailer on top of the steel beam. Please confirm this is the desired method on connection for attaching the 6x10 RR?

Response: *Yes, per the structural engineer, (4) 16d toenails will provide an adequate connection for the loads on the 6x10 roof rafters. As an alternate, (2) ¼” dia x 4 ½” SDS screws may be used for each 6x10 roof rafter.*

10. Gate sensors and remotes?

Response: *Please provide three (3) sensor loops, 4’x10’ with leads, one on each side of the gate and one 30’ from the gate on the inside. These are to be cut into the existing concrete driveway and sealed with appropriate caulking and color matched as closely as possible. Remotes to be programmed for the gate operators by the MFPD directly – not a part of this project.*

11. Security cameras?

Response: *CAT6 conduit run from Comm 112 for future camera at the gate.*

ALL-O-MATIC



818-787-1988

allomatic.net

SW-350 DC

SWING GATE OPERATOR

Our low-profile **DC Swing Gate Operator** designed to preserve a gate's beautiful design.



SW-350 DC

- ✓ For Gates Up To 22 Ft. Long
- ✓ Max Gate Weight
½ HP: 2,000 lbs.
1 HP: 2,500 lbs.
- ✓ Integrated Battery Backup
- ✓ Low Profile Heavy Duty Frame
- ✓ Maintenance Free Brushless DC Motor



RESIDENTIAL



COMMERCIAL



MECHANICAL
FOOT PEDAL
RELEASE



INNOVATIVE
CIRCUIT BOARD



WISE M/S
COMPATIBLE



24VDC SOLAR
POWER OPTION

SLIDERS | SWINGERS | OVERHEADS

The standard by which all other automatic gate operators are measured.

SCAN FOR
PRODUCT
INFORMATION



UL 325 2018
COMPLIANT

UL 991
COMPLIANT

CSA C22.2 #247



Intertek

ALL-O-MATIC



818-787-1988

allomatic.net



SCAN FOR
PRODUCT
INFORMATION

SW-350 DC SWING GATE OPERATOR



SPECS

Max Gate Weight	½ HP: 2,000 lbs. 1 HP: 2,500 lbs.
Max Gate Length	22 feet
Warranty	7 year residential - 5 year commercial
Motor	24 VDC brushless - ½ HP and 1 HP motor
Gate Speed	Adjustable 17-25 seconds per 90° opening
Power Options	115/230 VAC single phase and 24 VDC solar panel
Duty Cycle	Continuous
Battery Back Up	Integrated, with (2) 7Ah 12VDC batteries
Battery Back Up Capacity	Up to 250 cycles
Temperature Range	-40 to 160°
Gearbox Ratio	60:1 with internal clutch
Width X Length X Height	14" X 24" X 18"
Shipping Weight	½ HP: 190 lbs. + 35 lbs. arm 1 HP: 205 lbs. + 35 lbs. arm
Emergency Release	Mechanical foot pedal release
Belt Size	4L-360 (AX34)
Main Sprocket Size	40B54X1.25
Chain Size	40NP
Gearbox Sprocket	40B12X1
Limit Shaft Sprocket	N/A
Breaker Requirement	20 amp dedicated
Gearbox Pulley	7" with 3/4" bore
Motor Pulley	2" with 5/8" bore



RESIDENTIAL



COMMERCIAL

AVAILABLE ACCESSORIES



AML-1200B
Mag Lock



GH-1500
Hinges



Fire
Boxes



Solar
Panel



PRIME VD-1
Loop Detector

The Warrantor warrants the SW-350DC Gate Operator. ALL-O-MATIC INC warrants its gate openers for a period of five (5) years in commercial installations, and for a period of seven (7) years in residential installation to be free from defects in circuitry, motor, gear box and workmanship. This warranty applies from the date of purchase to the original owner. Warrantor will repair or, at its option, replace any device which it finds to require service. This device must be sent to the warrantor at the consumer's expense. The warrantor will return the repaired or replaced unit to the customer at the consumer's expense. Labor charges for dealer service or replacement are the responsibility of the owner. These warranties are in lieu of all other warranties either expressed or implied, and ALL-O-MATIC INC shall not be liable for consequential damage. All implied warranties of merchantability and or fitness for a particular purpose are hereby disclaimed and excluded. This limitation is not valid in jurisdictions which do not allow limitation of incidental or consequential damages or limitation of warranty periods. Caution in order to obtain this policy, please complete the registration card and send it by mail within 30 days of purchasing from ALL-O-MATIC INC. or your INSTALLER. If not registered only a one year warranty on all parts will be provided.

The standard by which all other automatic gate operators are measured.

UL 325 2018
COMPLIANT

UL 991
COMPLIANT

CSA C22.2 #247





1500 STAND ALONE DIGITAL KEYPADS ACCESS CONTROL

- RESIDENTIAL • GATED COMMUNITIES • APARTMENT COMPLEXES
- PARKING • CONDOMINIUM/RESIDENCE HALL • MIXED USE
- COMMERCIAL • SELF STORAGE • MAXIMUM SECURITY



1504 surface mount with intercom



1506 flush mount with lighted keys



1506 surface mount



1515 surface mount

- Rugged Steel Cabinet with Stainless Steel Faceplates and Metal Keypads
- PIN (Personal Identification Number) Codes are programmable from the Keypad, or from a DoorKing Smartphone App (1515, 1504 models)
- EEPROM Memory will not lose Programmed Codes during power outages
- Secondary Keypad capability for Controlled Entry / Exit Applications (1506 only)
- 2-Year Limited Factory Warranty



Intercom model
1504 can be used with some existing intercom systems



keypad users
enter 4-5 digit unique PIN to gain entry



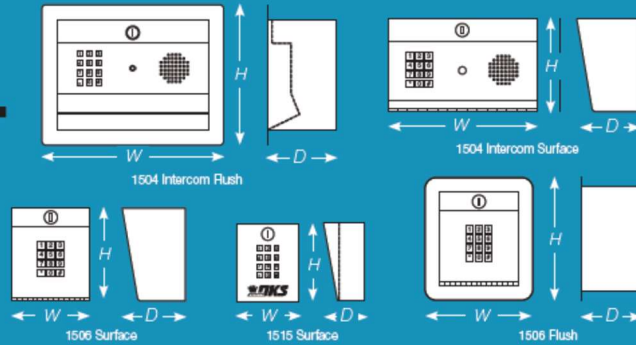
lighted keys
for easy night time operation



android smartphone
for manager programming and user entry (1515 model)

ACCESS CONTROL SOLUTIONS

1500 STAND ALONE DIGITAL ACCESS CONTROL KEYPADS



1504 Intercom

10" W x 6.25" H x 5.25" D
(336.5mm W x 381mm H x 88.9mm D)

1506 Surface

5.25" W x 6.25" H x 4.375" D
(285mm W x 330mm H x 120.6mm D)

1506 Flush

keypad with trim ring
7.125" W x 8.375" H x 4" D
(305mm W x 343mm H x 63.5mm D)
rough-in box:
5.625" W x 7" H x 4" D
(305mm W x 343mm H x 63.5mm D)

1515 Surface

4.5" W x 5.375" H x 3.6875" D
(114.3mm W x 136.5mm H x 93.6mm D)

Technical Features

All models

Ideal for Controlling Doors or Gates
Add or delete individual Codes from the Keypad
Add or delete individual Codes from an Android Smartphone using the DKS App (1515 only).
Lighted Keypad
"Hold" Code to latch open a Door or Gate
EEPROM Memory

Miscellaneous

Environmental: -10°F to 115°F (-23°C to 46°C)
Shipping weight approximately 8-20 lb (3.6-9 kg)
Mounting: Surface / Post Mount
Flush mount

1504 with Intercom Substation

Combines the 1506 or 1515 Keypad (and the features of each as listed here) into a Common Housing with an Intercom Sub-Station
A Master Intercom Station (not provided) is required to establish communication with the 1504 (may not be compatible with some intercom systems)
Also available as a Card Reader / Keypad System

1506 Digital Keypads Mechanical

1000 4-Digit Codes
Six 5-Digit Codes
Add or delete individual codes from the Keypad
Time Zone Inputs
Secondary Keypad capability

Electrical

16 Volt AC
Power Transformer included
Form C Dry Contact Relay
30 V 1 amp maximum

1515 Digital Keypads Mechanical

400 Memory Capacity for Momentary Entry or Hold Open Entry Codes or any combination thereof
Selectable 4 or 5-Digit Codes
Low Power Mode for Solar Applications. Less than 1ma current in Low Power Mode
Door Open Time settable from 1/4 second to 99 seconds
Wrong Entry Code Lockout settable from 3-9 tries and 1-9 minutes
Programming via the Keypad or from the DoorKing Android Digital Lock Manager App using Near Field Communication (NFC)
DoorKing Smart Open App for users to activate the Entry Codes using their Android NFC Smartphone. Apps are free from the Google Play Store

Electrical

12 to 24 Volt AC or DC power
Form C Dry Contact Relay
30 V 1 amp maximum
Request to Exit Input



Access Control Solutions since 1948

Distributed by:

MEMBER:



DOOR KING, INC.

120 Glasgow Avenue, Inglewood, California 90301 U.S.A.
Tel: 310-645-0023 FAX: 310-641-1586 www.doorking.com
© 2018 All Rights Reserved. Product specifications may change without notice.
Rev. 4/18

Simplex® 1000



Features

Access Control

Mechanical pushbutton lock – eliminates problems and costs associated with issuing, controlling, and collecting keys and cards. Provides exterior access by combination, while allowing free egress

No Battery

Fully mechanical lock eliminates the material and labor expense of battery replacements

Locking Device

Cylindrical latch with 3-hour UL/ULC fire rating on "A" labeled doors

Number of Codes

Single access code—one easy-to-manage code for all users

Programming

Lock is easily programmed via keypad without removing lock from the door

Handing

Factory-handed for left-hand doors; easily changed in the field

Key Override (Optional)

Small format interchangeable cores, large format removable cores

Operation Modes

- Pushbutton Access
- Passage (select models)—allows access without using the lock entry code. Feature activated from the inside with a thumbturn or key (included with all passage feature models).
- Lockout (select models)—disables the lock from the inside so that the entry code cannot be used to gain access. Access is permitted using the key override only.

Economical

A cost effective access control solution

Mechanical Features

Construction	Heavy-duty cylindrical lock housing with cast front housing; unified trim plate; cast knobs
Numeric Keypad	Vandal resistant, solid metal pushbuttons
Standard Finishes	Satin Chrome: 26D (626), Antique Brass 05 (609)
Optional Finishes	Bright Brass 03 (605), Bright Chrome 026 (625)
Backset	2 3/4" (70 mm), 2 5/8" (60 mm)
Latch	1/2" (13 mm) throw latch, 3/4" (19 mm) throw latch (optional)
Minimum Stile Recommended	5" (127 mm)
Weight	7.25 lbs. (3.3 kg)
Strike	Standard strike plate; ASA strike plate

Key Override

Interchangeable Cores	Small format—Best and equivalents (6 or 7-pin length); core not included
Removable Cores	Large format—Medeco/ASSA/Yale/Abloy (5 or 6-pin length), Corbin Russwin (6-pin length), Schlage, and Sargent; core not included

Installation

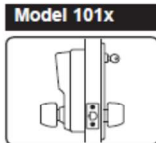
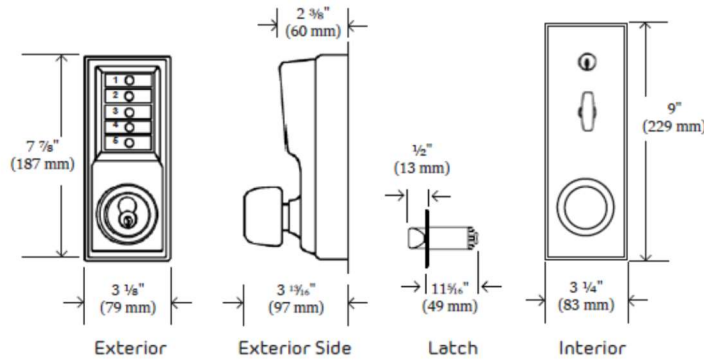
Door Preparation	Easily installs on wood or metal doors. ASA 161 door preparation with additional through bore holes required.
Door Thickness	Pre-assembled to accommodate 1 5/8" (41mm) to 1 7/8" (48mm) doors. Hardware included to cover door thickness applications: 1 3/8" (35mm) to 1 1/2" (38mm), 2" (51mm) to 2 1/4" (57mm)
Items Supplied Include	Lock assembly, installation manual, full-scale template, combination change plug and access key, and required installation hardware

Certification and Testing

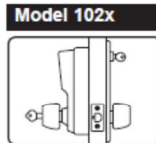
Durability	D.O.D. Compliant 5220.22M for supplemental access control; weather resistant
Fire Rating	3-hour UL/ULC fire rating for "A" labeled doors

Warranty

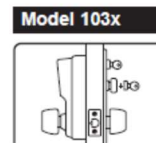
Warranty	3-year warranty
-----------------	-----------------



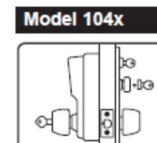
- Combination Entry
- Interior Combination Change



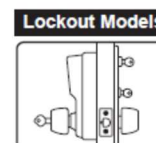
- Combination Entry
- Key Override (not supplied)
- Interior Combination Change



- Combination Entry
- Interior Combination Change
- Passage



- Combination Entry
- Key Override (not supplied)
- Passage
- Interior Combination Change



- Combination Entry
- Key Override (not supplied)
- Interior Combination Change
- Lockout from Inside Trim

Kaba Access & Data Systems Americas
 Winston-Salem NC 27105
 1-800-849-8324
 www.kaba-adsamericas.com

KAA1065 0316