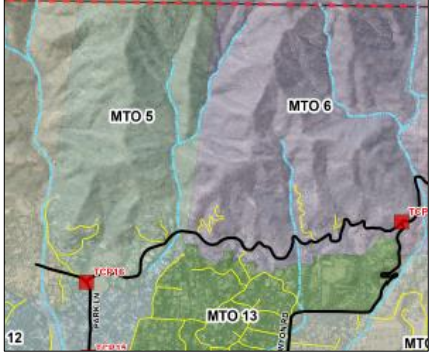


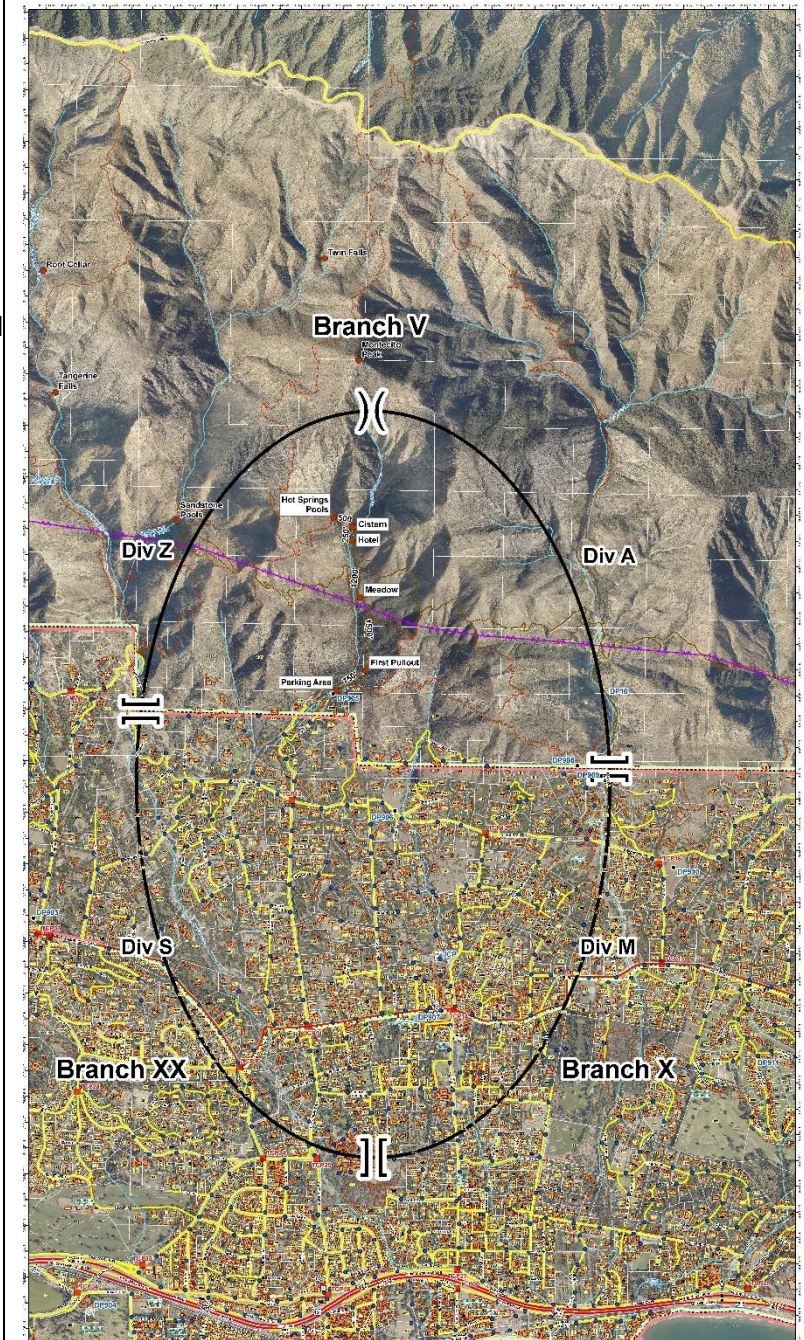


HOT SPRINGS CANYON PREPLAN - Wind Driven Event

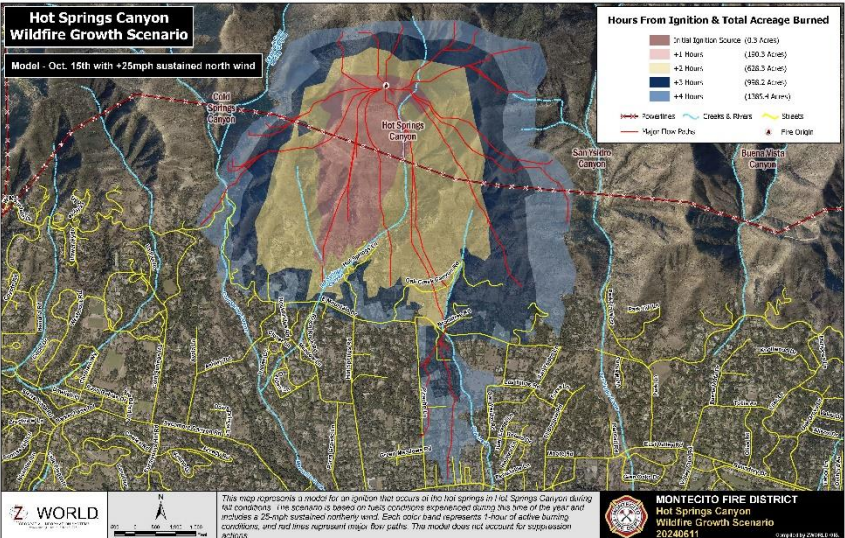
Location	Hot Springs Canyon North of HWY 192 - East of Cold Springs Canyon to San Ysidro Canyon																																																	
ICP	INITIAL: BC Vehicle/MTO Station 91 (595 San Ysidro Rd) EXTENDED: MTO Station 91 (595 San Ysidro Rd)																																																	
Preplan Zone	XSBC 904W / MTO Hot Springs Canyon																																																	
Lat/Long; W3W ; USNG	34 27.745'N 119 38.366' ; ///configured.cabins.subsides ; 11S KU 57568 16592																																																	
USGS Topo Quad	Santa Barbara																																																	
Jurisdiction (DPA)	State: Highway 192 to ~1000 Hot Springs Fed: North of 1000 Hot Springs																																																	
Structures & Population	Occupied Structures: ~2000 Population: ~5000																																																	
Objectives	<ul style="list-style-type: none"> - Firefighter and Civilian Safety - Provide for evacuation of the public - Protect structures - Provide for evacuation of horses and other livestock <ul style="list-style-type: none"> - Keep Fire North of Highway 192 - Keep Fire South of Camino Cielo Rd - Keep Fire East of Cold Spring Canyon - Keep Fire West of Buena Vista Canyon 		 PreAttack Plans/Maps																																															
SRA 1st Alarm High Resp. Level	SBC - 4 T-3 ENG, 1 WT, 2 CRW, 2 DZ, 1 BC, 1 Helicopter, 1 AA, 2 AT; STB: 1 T-3 ENG, 1 T-1 ENG, 1 BC MTO - 1 T-3 ENG, 1 T-1 ENG, 1 T-6 ENG, 1 BC; CRP: 1 T-3 ENG, 1 T-6 ENG, 1 BC LPF - 3 T-3 ENG, 1 WT, 1 CRW, 1 DZ, 1 BC, 1 FPT		<table border="1" style="font-size: small; text-align: center;"> <tr><th>T-1</th><th>T-3</th><th>T-6</th><th>CRW</th><th>DOZ</th><th>WT</th><th>HEL</th><th>CO</th><th>AT</th></tr> <tr><td>2</td><td>10</td><td>2</td><td>3</td><td>3</td><td>1</td><td>1</td><td>5</td><td>2</td></tr> </table>	T-1	T-3	T-6	CRW	DOZ	WT	HEL	CO	AT	2	10	2	3	3	1	1	5	2																													
T-1	T-3	T-6	CRW	DOZ	WT	HEL	CO	AT																																										
2	10	2	3	3	1	1	5	2																																										
Reinforced Response	SBC - Second Alarm equal to Initial Attack Assignment + 1 DC; +2 AT; Open Expanded																																																	
FRA 1st Alarm High Resp. Level	SBC - 3 T-3 ENG, 1 WT, 1 CRW, 1 DZ, 1 BC; STB: 1 T-3 ENG, 1 T-1 ENG, 1 BC LPF - 5 T-3 ENG, 2 WT, 2 CRW, 2 DZ, 1 BC, 1 DC, 2 FPT, 2 HELO, 1 HT, 1 AA, AT(req) MTO - 1 T-3 ENG, 1 T-1 ENG, 1 T-6 ENG, 1 BC; CRP: 1 T-3 ENG, 1 T-6 ENG, 1 BC		<table border="1" style="font-size: small; text-align: center;"> <tr><th>T-1</th><th>T-3</th><th>T-6</th><th>CRW</th><th>DOZ</th><th>WT</th><th>HEL</th><th>BC</th><th>AT</th></tr> <tr><td>2</td><td>11</td><td>2</td><td>3</td><td>3</td><td>3</td><td>2</td><td>6</td><td>R</td></tr> </table>	T-1	T-3	T-6	CRW	DOZ	WT	HEL	BC	AT	2	11	2	3	3	3	2	6	R																													
T-1	T-3	T-6	CRW	DOZ	WT	HEL	BC	AT																																										
2	11	2	3	3	3	2	6	R																																										
Mutual Threat Zone	<table border="1" style="font-size: x-small; text-align: center;"> <tr><th>Total Resources</th><th>T-1</th><th>T-3</th><th>T-6</th><th>CRW</th><th>DOZ</th><th>WT</th><th>HEL</th><th>CO</th><th>AA</th><th>AT</th><th>INV</th></tr> <tr><td>SRA/LRA DPA</td><td>2</td><td>10</td><td>2</td><td>3</td><td>3</td><td>1</td><td>1</td><td>6</td><td>1</td><td>2</td><td>1</td></tr> </table>	Total Resources	T-1	T-3	T-6	CRW	DOZ	WT	HEL	CO	AA	AT	INV	SRA/LRA DPA	2	10	2	3	3	1	1	6	1	2	1	<table border="1" style="font-size: x-small; text-align: center;"> <tr><th>Total Resources</th><th>T-1</th><th>T-3</th><th>T-6</th><th>CRW</th><th>DOZ</th><th>WT</th><th>HEL</th><th>CO</th><th>AA</th><th>AT</th><th>INV</th></tr> <tr><td>FRA DPA</td><td>2</td><td>12</td><td>2</td><td>4</td><td>4</td><td>3</td><td>3</td><td>6</td><td>1</td><td>2</td><td>2</td></tr> </table>	Total Resources	T-1	T-3	T-6	CRW	DOZ	WT	HEL	CO	AA	AT	INV	FRA DPA	2	12	2	4	4	3	3	6	1	2	2
Total Resources	T-1	T-3	T-6	CRW	DOZ	WT	HEL	CO	AA	AT	INV																																							
SRA/LRA DPA	2	10	2	3	3	1	1	6	1	2	1																																							
Total Resources	T-1	T-3	T-6	CRW	DOZ	WT	HEL	CO	AA	AT	INV																																							
FRA DPA	2	12	2	4	4	3	3	6	1	2	2																																							
LRA 1st Alarm High Resp. Level	MTO - 1 T-3 ENG, 1 T-1 ENG, 1 T-6 ENG, 1 BC CRP - 1 T-3 ENG, 1 T-6 ENG, 1 BC SBC - 1 T-3 ENG; STB - 1 T-3 ENG, 1 T-1 ENG, 1 BC LPF - 3 T-3 ENG, 1 DZ, 1 CRW, 1 WT, 1 FPT, 1 BC		<table border="1" style="font-size: small; text-align: center;"> <tr><th>T-1</th><th>T-3</th><th>T-6</th><th>CRW</th><th>DOZ</th><th>WT</th><th>HEL</th><th>BC</th><th>AT</th></tr> <tr><td>2</td><td>7</td><td>2</td><td>1</td><td>1</td><td>1</td><td>0</td><td>4</td><td>0</td></tr> </table>	T-1	T-3	T-6	CRW	DOZ	WT	HEL	BC	AT	2	7	2	1	1	1	0	4	0																													
T-1	T-3	T-6	CRW	DOZ	WT	HEL	BC	AT																																										
2	7	2	1	1	1	0	4	0																																										
Reinforced Response	MTO - Additional Operational Area resources by request																																																	
Staging Area	<ol style="list-style-type: none"> 1. Westmont College (50+ Engines) 955 La Paz Rd 2. DP 53/910 (50 Engines) Field south of 809 Park Lane (access into San Ysidro Canyon) 3. Regency Innovation Place (30 Engines) 100 Innovation Place 																																																	
Communications	Command SBC C2 or SBC C3 LPF FN(Tone 3 La Cumbre 131.8) Tactical CDF T11 CDF T4 VFIRE 22 VFIRE 23 VFIRE 26 LPF T3(168.2625) LPF T4(168.1250) Air to Ground CDF AG1(151.2200) CDF AG2(159.2625) FSR5 AG41(167.4750)																																																	
Traffic Control Points	<ul style="list-style-type: none"> <li style="width: 50%;">- TCP 09 Cold Spring @ E. Mtn Dr <li style="width: 50%;">- TCP 11 Hot Springs @ Hwy 192 <li style="width: 50%;">- TCP 07 Cold Spring @ Hwy 192 <li style="width: 50%;">- TCP 14 San Ysidro @ Hwy 192 <li style="width: 50%;">- TCP 10 Sycamore Cyn @ E Valley Rd <li style="width: 50%;">- TCP 17 Sheffield Dr @ Hwy 192 																																																	
Evacuation	Institute Law Branch EARLY .																																																	
Civilian Collection Point	Earl Warren Showground Las Positas Rd @ HWY 101																																																	
Possible Additional Resources Needed (After 1st and 2nd Alarms)																																																		
Engines - Type 3	8 Strike Teams	Air Resources	6 Type 2 Air tankers; Mobile Retardant Base																																															
Engines - Type 1/2	15 Strike Teams	Helicopters	8 Type 2, 4 Type 1 Helicopters																																															
Handcrews	8 Type 1 S/T Crews	Watertenders	6 Water Tenders																																															
Dozers	4 S/T Type 2 Dozers	Overhead	6 OPBD, 8 DIVS, 4 SOFR, 4 FOBS, 2 STAM																																															
Consequences of Escape	<ol style="list-style-type: none"> 1. Fire spreads south over HWY 192 into the community of Montecito, suburban residential & light commercial. 2. Fire spreads southwest threatening Montecito; area is primarily interface, suburban. Last burned in 2008 Tea Fire. 3. Fire spreads southeast threatening Montecito; area is interface, suburban. Last burned: 2017 Thomas Fire. 4. Fire spreads north over Camino Cielo to heavy continuous fuel on north slope of Santa Ynez Mountains. 																																																	
Notification of Potential Evacuation	<ol style="list-style-type: none"> 1. Zone MTO 3 – Cold Spring Cyn to Hot Springs Cyn – Consider Evacuation Order 2. Zone MTO 4 – Hot Springs Cyn to San Ysidro Cyn – Consider Evacuation Order 3. Zone MTO 5 – San Ysidro Cyn to Buena Vista Cyn – Consider Evacuation Warning 4. Zones MTO 10, 11, 12 – Pepper Hill through Park Lane – Consider Evacuation Order; Adjust for wind direction 5. Zones MTO 16, 17, 18 – Consider Evacuation Warning 																																																	
Fire History	2017: Thomas Fire burned 281,893 acres: Jesusita/Tea Fires to county line 2009: Jesusita Fire burned 8,733 acres: HWY 154 to Gibraltar Rd/ Tea Fire 2008: Tea Fire burned 1,940 acres: Gibraltar Rd to Cold Spring Creek 1971: Romero Canyon Fire burned 15,600 acres in Romero Canyon; 4 firefighter fatalities occurred 1964: Coyote Fire burned 67,000 acres: HWY 154 to Rincon Creek																																																	
Special Hazards	<ol style="list-style-type: none"> 1. Front Country canyons aligned with <i>sundowner</i> wind conditions. Request Spot Wx Forecast ASAP 2. Narrow winding roads and driveways. Minimal turnarounds. 3. Congested area with large civilian population and limited access and egress. 4. Minimal Safety Zones or Safe Refuge Areas. 5. Numerous structures with poor defensible space. 6. Thermal belt conditions exist at mid slope of Santa Ynez Mtns. 7. Steep drainages oriented north and south. Structures located on all slope aspects. 8. Power lines throughout the operational area. 9. Mountain Drive is a Mid-slope road. 10. Confluence of multiple Fire Jurisdictions complicates command and control. Establish Unified Command. 																																																	

HOT SPRINGS CANYON OPERATIONS - Wind Driven Event

<p>Operational Structure</p> <ul style="list-style-type: none"> 2 Branches: Branch Break at SRA/FRA line. Branch V FRA, Branch X SRA. Consider a 3rd – Law Branch 4 Divs: Div Alpha, Mike, Sierra, Zulu 	<ul style="list-style-type: none"> Civilian Evacuation Branch V <ul style="list-style-type: none"> Div A / Div Z <ul style="list-style-type: none"> Anchor and effect perimeter control on flanks, once possible Control the heel collaborating with Div A/Z Point protection at structures as necessary Plan for E. Camino Cielo contingency Branch X / XX <ul style="list-style-type: none"> Div M / Div S <ul style="list-style-type: none"> Immediately plan for and implement evacuations Assign engines and Strike Teams to neighborhoods as available Plan for medical emergencies Stage appropriate equipment Plan for contingencies and additional Divisions Law Branch <ul style="list-style-type: none"> Staff TCPs and assist in evacuation/notifications
<p>Operational Priorities</p>	<p>Fire behavior will be dependent on the time of year, with the highest intensity and resistance to control coming in the fall months.</p> <ul style="list-style-type: none"> Aircraft will be effective in the lighter fuel loads since the 2017 Thomas fire burned most of the vegetation. Anticipate fire behavior to moderate overnight with the marine influence. Pay attention to the weather forecast and the potential for sundowner winds...plan accordingly.
<p>Basic Fire Behavior Expectations (2024)</p>	<ul style="list-style-type: none"> Branch V <ul style="list-style-type: none"> Div A / Div Z <ul style="list-style-type: none"> Type 1 Crews Type 2 Dozers Engines or pumping platform as possible <ul style="list-style-type: none"> Type 3 or Type 6 Multiple portable tanks (relay or helicopter fill) Engines for patrol/prep at structures <ul style="list-style-type: none"> Type 1, 3, or 6 Utilize aircraft to assist with securing the edge and making direct attack feasible With Div A/Z, plan for and prep contingency on E. Camino Cielo Branch X / XX <ul style="list-style-type: none"> Div M / Div S <ul style="list-style-type: none"> Crews and Dozers in staging for assignment where needed (use UTVs for scouting/spotting) Aircraft to provide point protection and perimeter control where possible Engines (Type 1, 3, 6) for structure defense Water Tenders for support Law Enforcement Ambulance(s) Law Branch <ul style="list-style-type: none"> 1 supervisor at ICP 6+ units for TCP staffing Multiple units for evacuation and control SAR for evacuation assistance
<p>Immediate Operational Resource Needs</p>	



PreAttack Plans/Maps



Consider ordering the South Ops aircraft Quick Reaction Force (you can order the parts you need; it does not have to all be ordered):

- To request, place an order for what you want:
 - 1, 2, or 3 Type 1 helicopters for retardant/water, night capable
 - Additional Type 1 for HELCO/Camera Platform
 - Mobile Retardant Base
 - Confirm that you are requesting the QRF resources