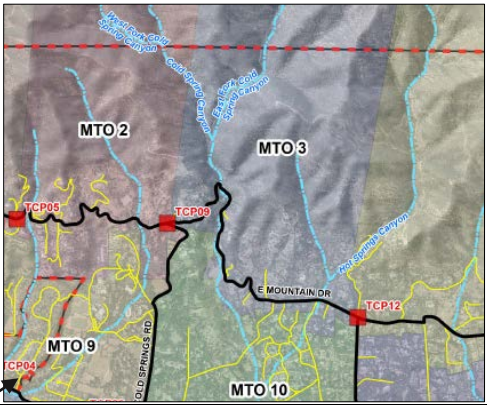



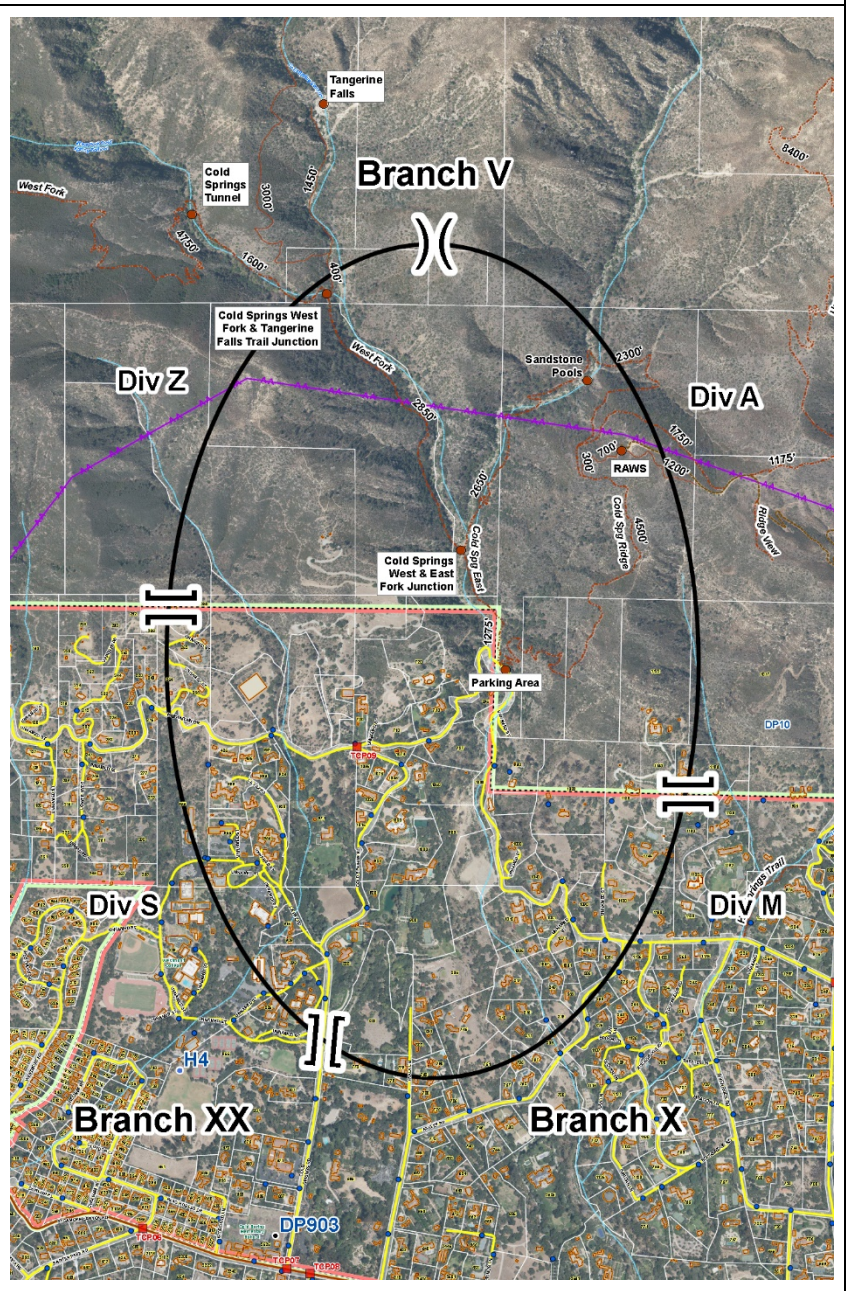
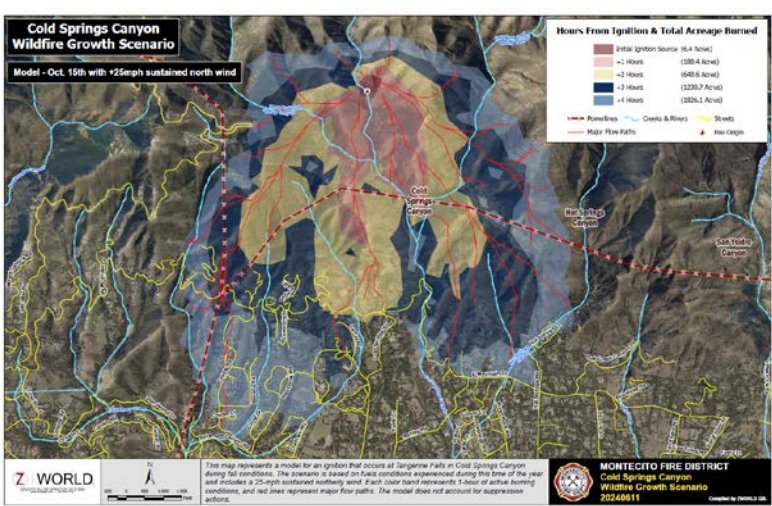


COLD SPRING CANYON PREPLAN - Wind Driven Event

Location	Cold Spring Canyon North of HWY 192 - East of Rattlesnake Canyon to Hot Springs Canyon																																																																				
ICP	INITIAL: BC Vehicle/MTO Station 91 (595 San Ysidro Rd) EXTENDED: MTO Station 91 (595 San Ysidro Rd)																																																																				
Preplan Zone	XSBC 902W / MTO Cold Spring Canyon																																																																				
Lat/Long; W3W; USNG	34 27.563'N 119 39.245' ; ///roofless.assured.traces ; 11S KU 56198 16291																																																																				
USGS Topo Quad	Santa Barbara																																																																				
Jurisdiction (DPA)	State: Highway 192 to ~ 895 E. Mountain, Fed: North of E. Mountain																																																																				
Structures & Population	Occupied Structures: ~852 Population: ~2132																																																																				
Objectives	<ul style="list-style-type: none"> - Firefighter and Civilian Safety - Provide for evacuation of the public - Protect structures - Provide for evacuation of horses and other livestock <ul style="list-style-type: none"> - Keep Fire North of Highway 192 - Keep Fire South of Camino Cielo Rd - Keep Fire East of Rattlesnake Canyon - Keep Fire West of Hot Springs Canyon 		 <p style="text-align: center;">PreAttack Plans/Maps</p>																																																																		
SRA 1st Alarm High Response Level	SBC - 4 T-3 ENG, 1 WT, 2 CRW, 2 DZ, 1 BC, 1 Helicopter, 1 AA, 2 AT; STB: 1 T-3 ENG, 1 T-1 ENG, 1 BC MTO - 1 T-3 ENG, 1 T-1 ENG, 1 T-6 ENG, 1 BC; CRP: 1 T-3 ENG, 1 T-6 ENG, 1 BC LPF - 3 T-3 ENG, 1 WT, 1 CRW, 1 DZ, 1 BC, 1 FPT		<table border="1" style="font-size: small;"> <tr><th>T-1</th><th>T-3</th><th>T-6</th><th>CRW</th><th>DOZ</th><th>WT</th><th>HEL</th><th>CO</th><th>AT</th></tr> <tr><td>2</td><td>10</td><td>2</td><td>3</td><td>3</td><td>1</td><td>1</td><td>5</td><td>2</td></tr> </table>	T-1	T-3	T-6	CRW	DOZ	WT	HEL	CO	AT	2	10	2	3	3	1	1	5	2																																																
T-1	T-3	T-6	CRW	DOZ	WT	HEL	CO	AT																																																													
2	10	2	3	3	1	1	5	2																																																													
Reinforced Response	SBC - Second Alarm equal to Initial Attack Assignment + 1 DC, +2 AT, Open Expanded																																																																				
FRA 1st Alarm High Response Level	SBC - 3 T-3 ENG, 1 WT, 1 CRW, 1 DZ, 1 BC; STB: 1 T-3 ENG, 1 T-1 ENG, 1 BC LPF - 5 T-3 ENG, 2 WT, 2 CRW, 2 DZ, 1 BC, 1 DC, 2 FPT, 2 HELO, 1 HT, 1 AA, AT(req) MTO - 1 T-3 ENG, 1 T-1 ENG, 1 T-6 ENG, 1 BC; CRP: 1 T-3 ENG, 1 T-6 ENG, 1 BC		<table border="1" style="font-size: small;"> <tr><th>T-1</th><th>T-3</th><th>T-6</th><th>CRW</th><th>DOZ</th><th>WT</th><th>HEL</th><th>CO</th><th>AT</th></tr> <tr><td>2</td><td>11</td><td>2</td><td>3</td><td>3</td><td>3</td><td>2</td><td>6</td><td>R</td></tr> </table>	T-1	T-3	T-6	CRW	DOZ	WT	HEL	CO	AT	2	11	2	3	3	3	2	6	R																																																
T-1	T-3	T-6	CRW	DOZ	WT	HEL	CO	AT																																																													
2	11	2	3	3	3	2	6	R																																																													
Mutual Threat Zone by DPA	<table border="1" style="font-size: x-small;"> <tr><th colspan="11">SRA / LRA DPA</th></tr> <tr><th>T-1</th><th>T-3</th><th>T-6</th><th>CRW</th><th>DOZ</th><th>WT</th><th>HEL</th><th>CO</th><th>AA</th><th>AT</th><th>INV</th></tr> <tr><td>2</td><td>10</td><td>2</td><td>3</td><td>3</td><td>1</td><td>1</td><td>6</td><td>1</td><td>2</td><td>1</td></tr> </table>	SRA / LRA DPA											T-1	T-3	T-6	CRW	DOZ	WT	HEL	CO	AA	AT	INV	2	10	2	3	3	1	1	6	1	2	1	<table border="1" style="font-size: x-small;"> <tr><th colspan="11">FRA DPA</th></tr> <tr><th>T-1</th><th>T-3</th><th>T-6</th><th>CRW</th><th>DOZ</th><th>WT</th><th>HEL</th><th>CO</th><th>AA</th><th>AT</th><th>INV</th></tr> <tr><td>2</td><td>12</td><td>2</td><td>4</td><td>4</td><td>3</td><td>3</td><td>6</td><td>1</td><td>2</td><td>2</td></tr> </table>	FRA DPA											T-1	T-3	T-6	CRW	DOZ	WT	HEL	CO	AA	AT	INV	2	12	2	4	4	3	3	6	1	2	2	
SRA / LRA DPA																																																																					
T-1	T-3	T-6	CRW	DOZ	WT	HEL	CO	AA	AT	INV																																																											
2	10	2	3	3	1	1	6	1	2	1																																																											
FRA DPA																																																																					
T-1	T-3	T-6	CRW	DOZ	WT	HEL	CO	AA	AT	INV																																																											
2	12	2	4	4	3	3	6	1	2	2																																																											
LRA 1st Alarm High Response Level	MTO - 1 T-3 ENG, 1 T-1 ENG, 1 T-6 ENG, 1 BC CRP - 1 T-3 ENG, 1 T-6 ENG, 1 BC SBC - 1 T-3 ENG; STB - 1 T-3 ENG, 1 T-1 ENG, 1 BC LPF - 3 T-3 ENG, 1 DZ, 1 CRW, 1 WT, 1 FPT, 1 BC		<table border="1" style="font-size: small;"> <tr><th>T-1</th><th>T-3</th><th>T-6</th><th>CRW</th><th>DOZ</th><th>WT</th><th>HEL</th><th>CO</th><th>AT</th></tr> <tr><td>2</td><td>7</td><td>2</td><td>1</td><td>1</td><td>1</td><td>0</td><td>4</td><td>0</td></tr> </table>	T-1	T-3	T-6	CRW	DOZ	WT	HEL	CO	AT	2	7	2	1	1	1	0	4	0																																																
T-1	T-3	T-6	CRW	DOZ	WT	HEL	CO	AT																																																													
2	7	2	1	1	1	0	4	0																																																													
Reinforced Response	MTO - Additional SBC and Operational Area resources by request																																																																				
Staging Area	<ol style="list-style-type: none"> Westmont College (50+ Engines) 955 La Paz Rd DP 53/910 (50 Engines) Field south of 809 Park Lane (access into San Ysidro Canyon) Regency Innovation Place (30 Engines) 100 Innovation Place 																																																																				
Communications	Command SBC C2 or SBC C3 LPF FN(Tone 3 La Cumbre ; 131.8) Tactical CDF T11 CDF T4 VFIRE 22 VFIRE 23 VFIRE 26 LPF T3(168.2625) LPF T4(168.1250) Air to Ground CDF AG1(151.2200) CDF AG2(159.2625) FSR5 AG41(167.4750)																																																																				
Traffic Control Points	<ul style="list-style-type: none"> - TCP09 Cold Spring @ E. Mtn Dr - TCP 05 Coyote @ E. Mountain - TCP 08 Eucalyptus Hill @ Hwy 192 		<ul style="list-style-type: none"> - TCP 12 Hot Springs @ E. Mtn Dr - TCP 06 Barker Pass @ Hwy 192 - TCP 10 Sycamore Cyn @ East Valley 																																																																		
Evacuation	Institute Law Branch EARLY.																																																																				
Civilian Collection Point	Earl Warren Showground Las Positas Rd @ HWY 101																																																																				
Possible Additional Resources Needed (After 1st and 2nd Alarms)																																																																					
Engines - Type 3	8 Strike Teams	Air Resources	6 Type 2 Air tankers; Mobile Retardant Base																																																																		
Engines - Type 1/2	15 Strike Teams	Helicopters	8 Type 2, 4 Type 1 Helicopters																																																																		
Handcrews	8 Type 1 S/T Crews	Water Tenders	6 Water Tenders																																																																		
Dozers	4 S/T Type 2 Dozers	Overhead	6 OPBD, 8 DIVS, 4 SOFR, 4 FOBS, 2 STAM																																																																		
Consequences of Escape	<ol style="list-style-type: none"> Fire spreads south over HWY 192 into the community of Montecito, suburban residential & light commercial. Fire spreads west threatening Rattlesnake Cyn; area is primarily intermix. Last burned in 2009 Jesusita Fire. Fire spreads east threatening Hot Springs Cyn; primarily intermix. Last burned: 2017 Thomas Fire. Fire spreads north over Camino Cielo to heavy continuous fuel on north slope of Santa Ynez Mountains. 																																																																				
Notification of Potential Evacuation	<ol style="list-style-type: none"> Zone MTO 2, 3/STB 1 – Coyote Rd. to Hot Springs Cyn – Consider Evacuation Order Zone MTO 1/MTO 8/SBC 16/STB 7 – Rattlesnake Cyn to Coyote Rd. – Consider Evacuation Order Zones MTO 9, 10/STB 1 – Coyote Rd through Hot Springs Rd – Consider Evacuation Order Zone MTO 4 – Hot Springs Cyn to San Ysidro Cyn – Consider Evacuation Warning Zones MTO 15, 16/STB 1 – Sycamore Cyn to Hot Springs Lower - Consider Evacuation Warning 																																																																				
Fire History	2017: Thomas Fire burned 281,893 acres: Jesusita/Tea Fires to county line 2009: Jesusita Fire burned 8,733 acres: HWY 154 to Gibraltar Rd/ Tea Fire 2008: Tea Fire burned 1,940 acres: Gibraltar Rd to Cold Spring Creek 1971: Romero Canyon Fire burned 15,600 acres in Romero Canyon; 4 firefighter fatalities occurred 1964: Coyote Fire burned 67,000 acres: HWY 154 to Rincon Creek																																																																				
Special Hazards	<ol style="list-style-type: none"> Front Country canyons aligned with <i>sundowner</i> wind conditions. Request Spot Wx Forecast ASAP Narrow winding roads and driveways. Minimal turnarounds. Congested area with large civilian population and limited access and egress. Minimal Safety Zones or Safe Refuge Areas. Numerous structures with poor defensible space. Thermal belt conditions exist at mid slope of Santa Ynez Mtns. Steep drainages oriented north and south. Structures located on all slope aspects. Power lines throughout the operational area. Mountain Drive is a Mid-slope road. Confluence of multiple Fire Jurisdictions complicates command and control. Establish Unified Command. 																																																																				

COLD SPRING CANYON OPERATIONS – Wind Driven Event

Operational Structure	<ul style="list-style-type: none"> 3 Branches: Branch Break at SRA/FRA line. Branch V FRA, Branch X/XX SRA. Consider a 4th – Law Branch 4 Divs: Div Alpha, Mike, Sierra, Zulu
Operational Priorities	<ul style="list-style-type: none"> Civilian Evacuation Branch V <ul style="list-style-type: none"> Div A / Div Z <ul style="list-style-type: none"> Anchor and effect perimeter control on flanks, once possible Control the heel collaborating with Div A/Z Point protection at structures as necessary Plan for E. Camino Cielo contingency Branch X / XX <ul style="list-style-type: none"> Div M / Div S <ul style="list-style-type: none"> Immediately plan for and implement evacuations Assign engines and Strike Teams to neighborhoods as available Plan for medical emergencies Stage appropriate equipment Plan for contingencies and additional Divisions Law Branch <ul style="list-style-type: none"> Staff TCPs and assist in evacuation/notifications <div data-bbox="1552 388 1814 668" style="text-align: right;">  <p>PreAttack Plans/Maps</p> </div>
Operational References	<ul style="list-style-type: none"> Set up helicopter ground fill at Westmont Lovik field below the tennis courts. (34°26.698' 119°39.743') Closest dip site is Jackson Ranch in Romero Canyon area. (34°26.780' 119°35.245')
Basic Fire Behavior Expectations (2024)	<ul style="list-style-type: none"> Fire behavior will be dependent on the time of year, with the highest intensity and resistance to control coming in the fall months. Aircraft will be effective in the lighter fuel loads since the 2017 Thomas fire burned most of the vegetation. Anticipate fire behavior to moderate overnight with the marine influence. Pay attention to the weather forecast and the potential for sundowner winds...plan accordingly.
Immediate Operational Resource Needs	<div data-bbox="372 1165 1108 2097" style="border: 1px solid black; padding: 5px;"> <ul style="list-style-type: none"> Branch V <ul style="list-style-type: none"> Div A / Div Z <ul style="list-style-type: none"> Type 1 Crews Type 2 Dozers Engines or pumping platform as possible <ul style="list-style-type: none"> Type 3 or Type 6 Multiple portable tanks (relay or helicopter fill) Engines for patrol/prep at structures <ul style="list-style-type: none"> Type 1, 3, or 6 Utilize aircraft to assist with securing the edge and making direct attack feasible With Div A/Z, plan for and prep contingency on E. Camino Cielo Branch X / XX <ul style="list-style-type: none"> Div M / Div S <ul style="list-style-type: none"> Crews and Dozers in staging for assignment where needed (use UTVs for scouting/spotting) Aircraft to provide point protection and perimeter control where possible Engines (Type 1, 3, 6) for structure defense Water Tenders for support Law Enforcement Ambulance(s) Law Branch <ul style="list-style-type: none"> 1 supervisor at ICP 6+ units for TCP staffing Multiple units for evacuation and control <ul style="list-style-type: none"> SAR for evacuation assistance </div> <div data-bbox="1118 1134 1925 2362" style="border: 1px solid black; padding: 5px;">  </div>



Consider ordering the South Ops aircraft Quick Reaction Force (you can order the parts you need; it does not have to all be ordered):

- To request, place an order for what you want:
 - 1, 2, or 3 Type 1 helicopters for retardant/water, night capable
 - Additional Type 1 for HELCO/Camera Platform
 - Mobile Retardant Base
 - Confirm that you are requesting the QRF resources